

## Antica calce plus

### 5396 Brushed effect decorative mineral coating for interiors

*Antica Calce Plus* is a lightly textured elegant finish coating characterized by light and shade effects which highlight the brush strokes, and is pleasant to the touch thanks to the traditional polishing technique. *Antica Calce Plus* is normally applied in at least two coats, with an indicative spreading rate of 0.4-0.6 kg/m<sup>2</sup> based on two coats.  
Tools: brush, steel trowel.



To learn more, consult the technical data sheet and the Applications DVD.

**san marco**  
SISTEMI VERNICIANTI PER L'EDILIZIA

Colorificio San Marco S.p.A.  
Via Alta 10 - 30020 Marcon (VE) - Italy - Tel. +39 041 456 93 22 - Fax +39 041 595 01 53  
e-mail: [info@san-marco.it](mailto:info@san-marco.it) - [export@san-marco.it](mailto:export@san-marco.it)  
[www.san-marco.it](http://www.san-marco.it) - [www.emozioniveneziane.it](http://www.emozioniveneziane.it)

LINEA TUTTORESTAURO

# Antica calce plus

Brushed effect decorative mineral coating for interiors

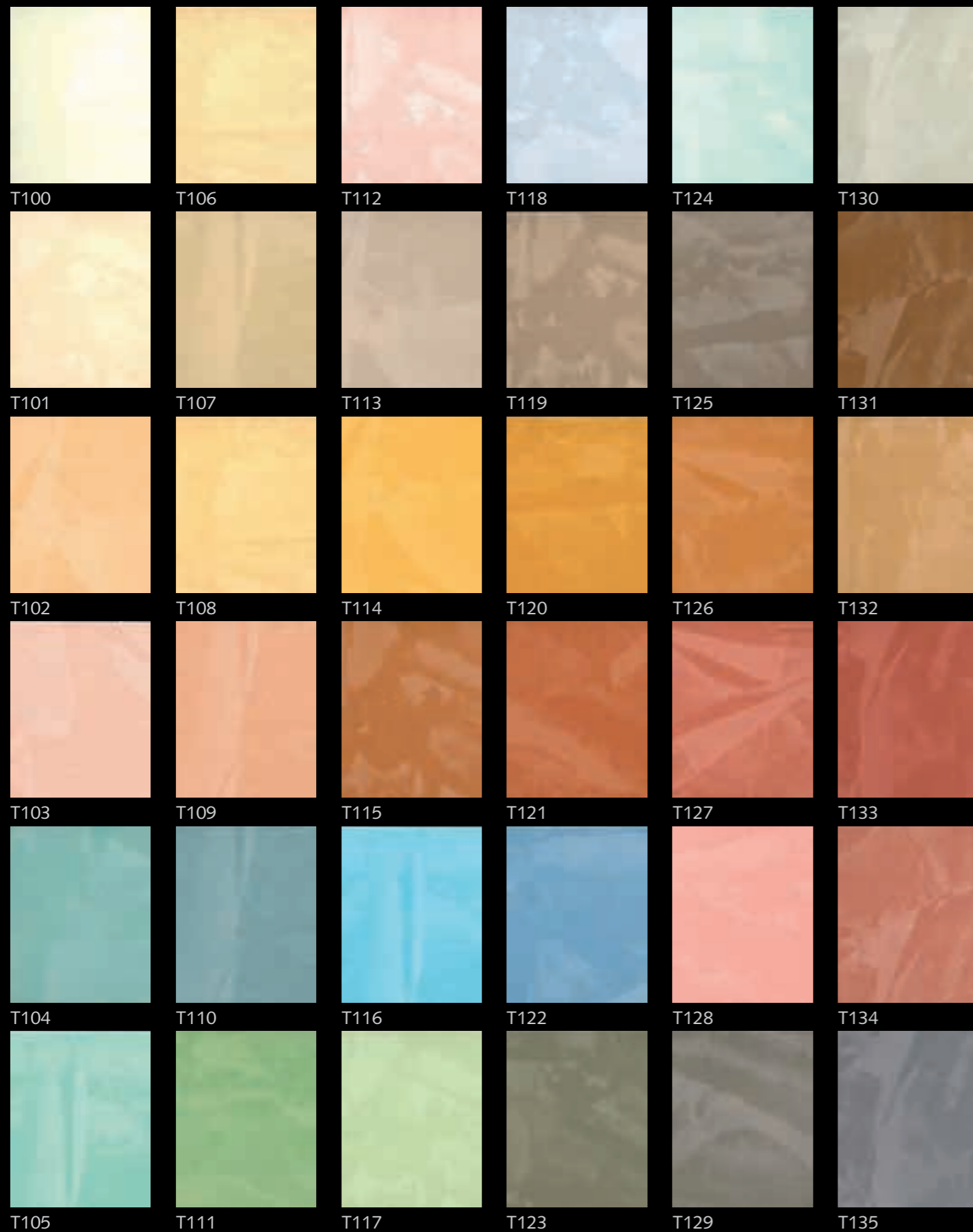
*Venetian emotions*

Cod. 55077 07.2008 Printed in Italy by GFP.it

**san marco**  
SISTEMI VERNICIANTI PER L'EDILIZIA

made  
in italy

## Antica calce plus



For the selection of colours, go to folder Finiture decorative minerali cod. 55021